

European Rail  
Infrastructure  
Managers



# Benefits of Cooperation

**Maria MARTISIUTE**

[maria.martisiute@eimrail.org](mailto:maria.martisiute@eimrail.org)

**INTER - Regio - Rail Conference - Bologna (IT)**

**15 May 2013**

## 1. EIM and the benefits of cooperation

- who we are
- what we work on
- how our members benefit

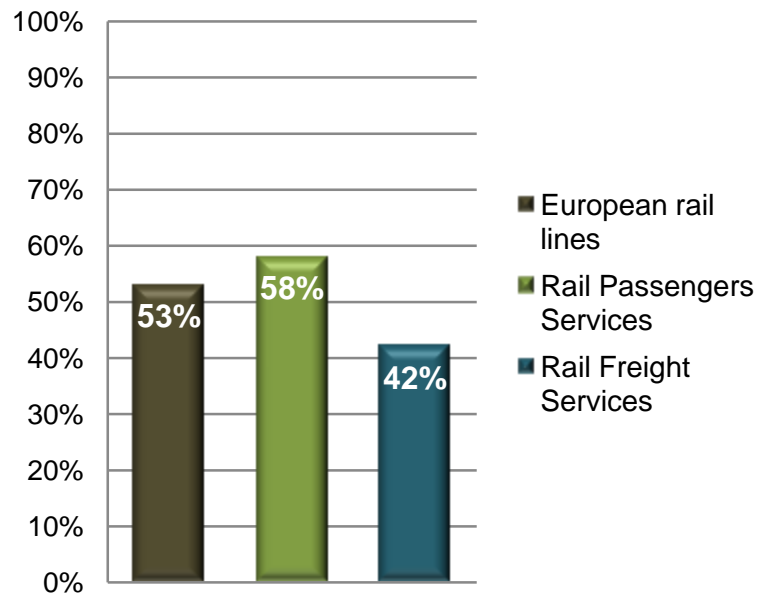
## 2. EU rail legislation

- role of IMs and the regions (4 RP / Corridors)
- increasing influence of regions and IMs

## 3. Conclusions

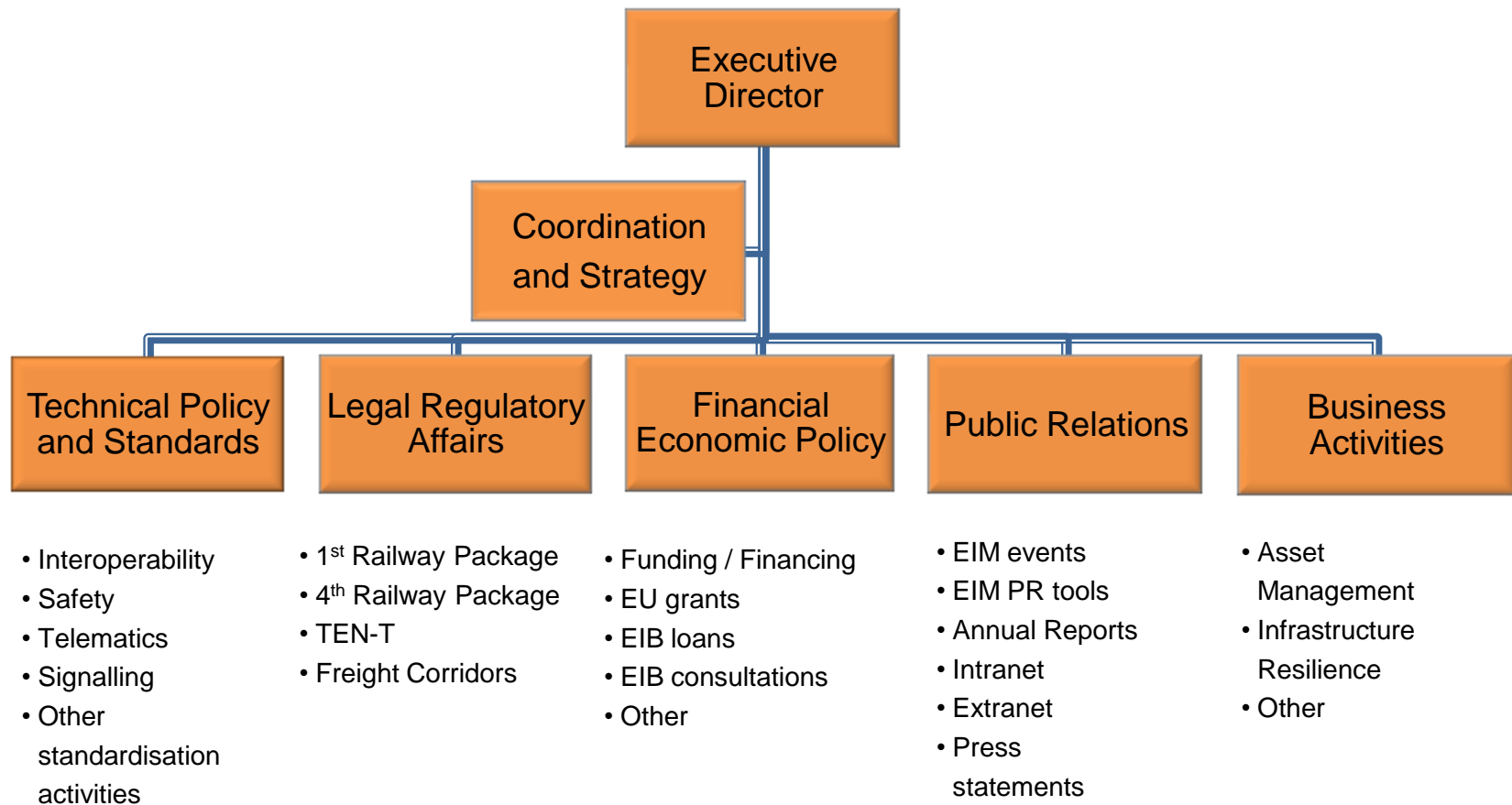
# Who are EIM?

Founded	March 2002
Legal entity	AISBL
Office	Brussels, Belgium
Coverage	11 countries
Members	11 full and 2 associates



# Who are EIM?

EIM is driven by both the **EU agenda** and the **business interests** of its Members



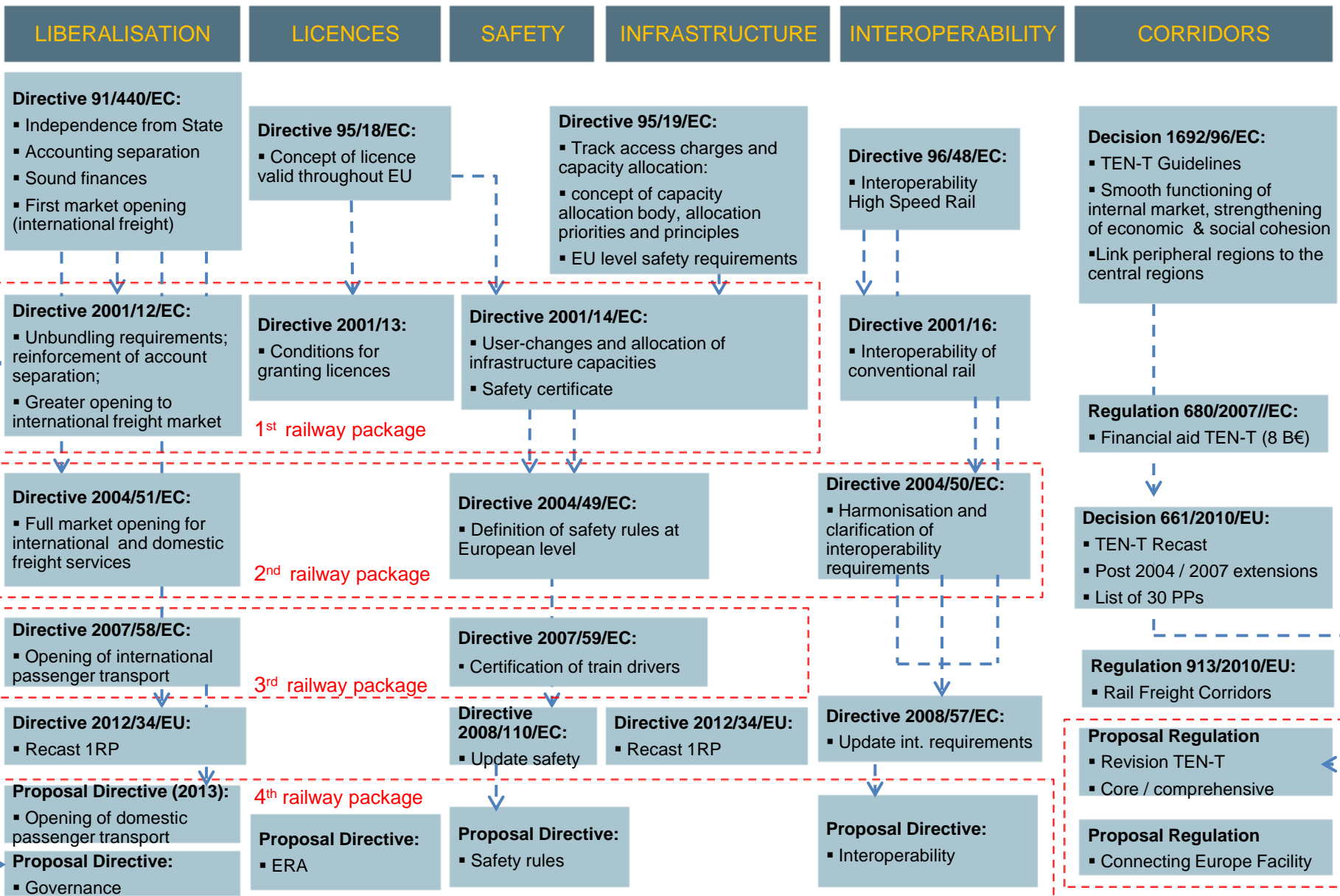
# What do we stand for?

---

## EIM:

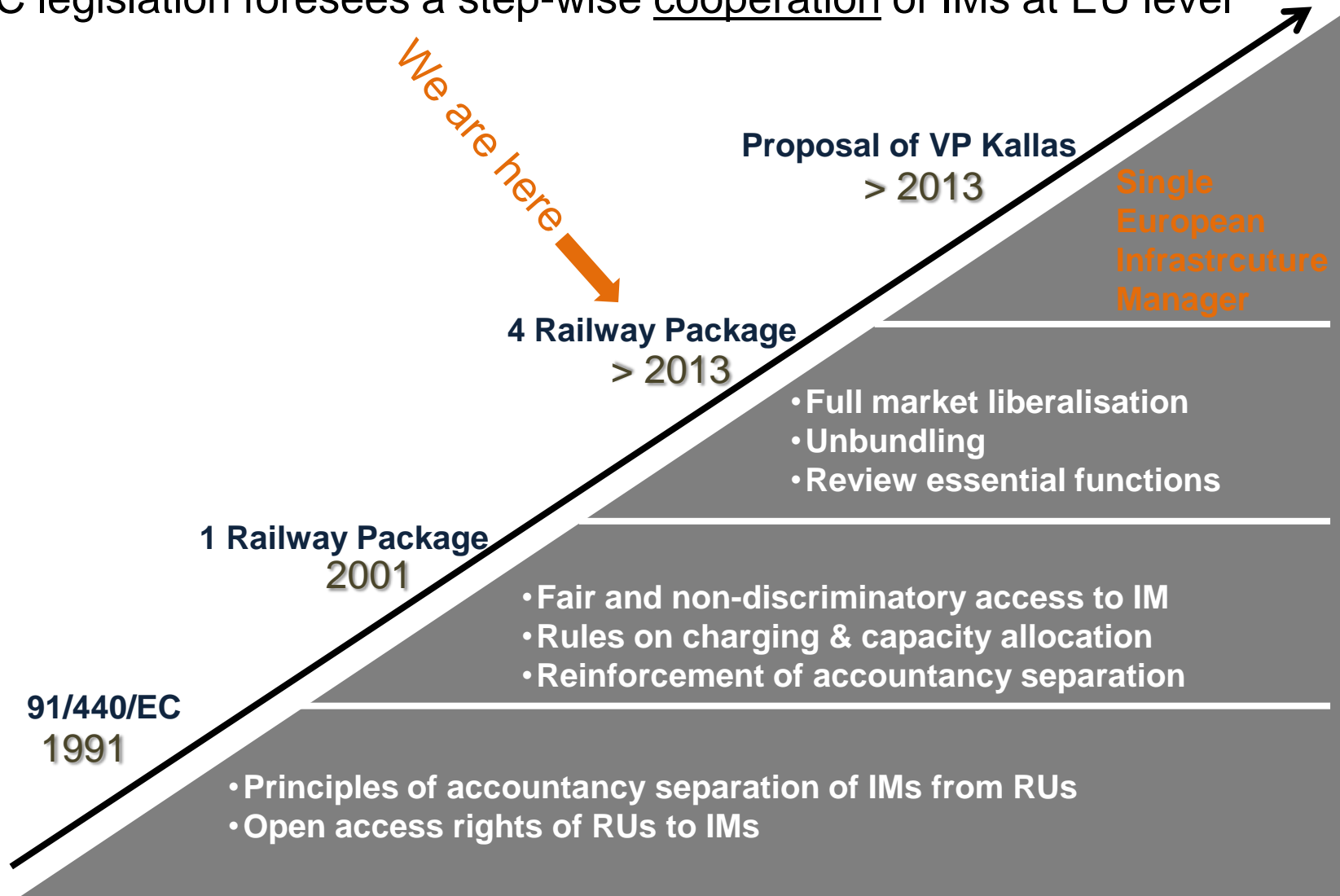
- ✓ **Promotes** the development, improvement and delivery of rail infrastructure in EU
- ✓ Is committed to making **liberalisation** a success
- ✓ **Represents** political, technical and business interests of its Members to EU
- ✓ Provides a **forum** for leaders of IMs to share best practices

# Which EC legislation do we cover?

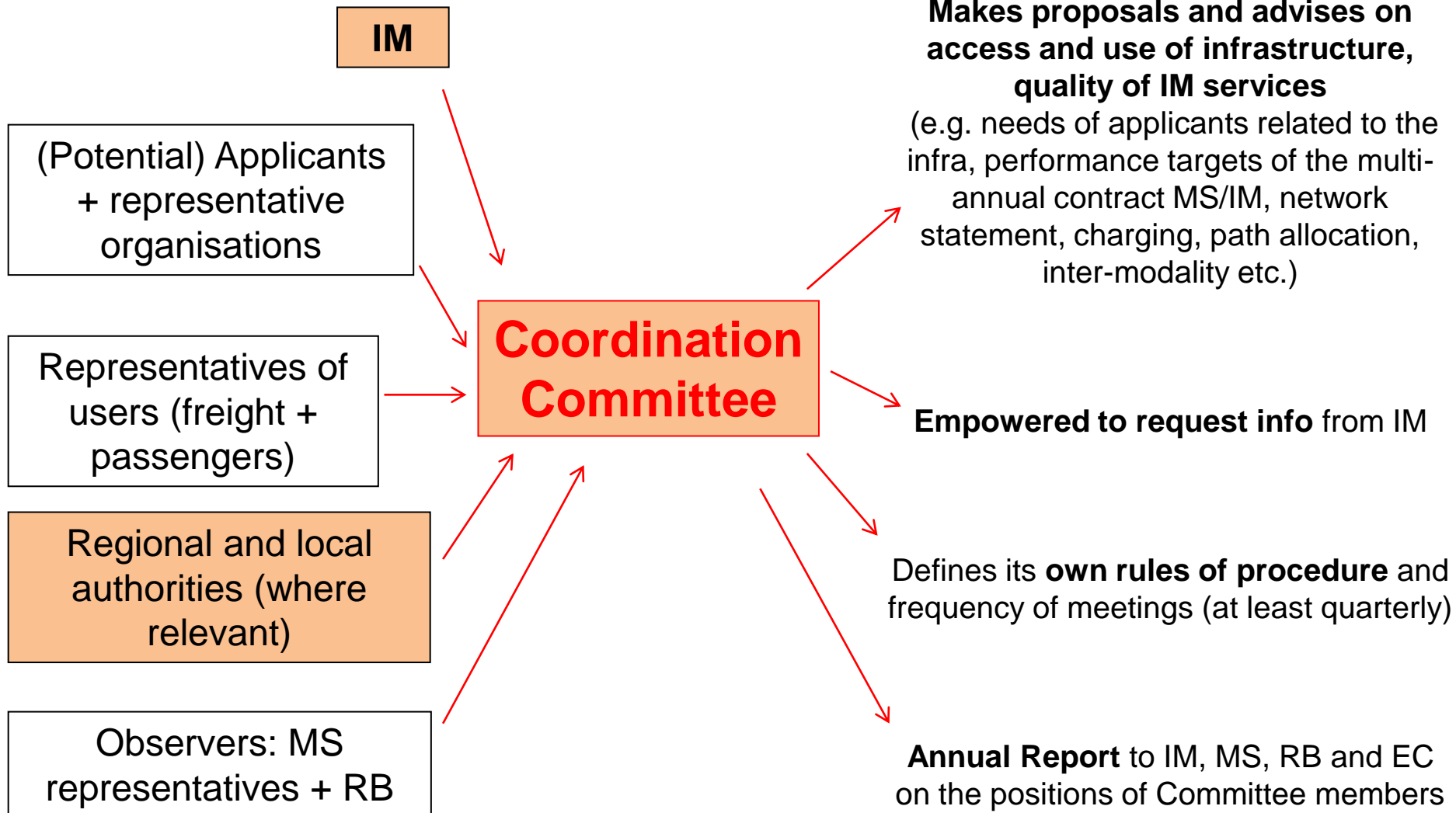


# What's in it for the IM's?

EC legislation foresees a step-wise cooperation of IMs at EU level



# What's in the 4 RP for us?





# What's in the 4 RP for us?



TRAFIKVERKET



Other IMs

**European  
Network of  
Infrastructure  
Managers**

EC

**Member + coordinates Network**  
may make recommendations and  
adopt measures on the common  
principles / practices or procedures  
of the network

**Coordination to develop the  
European rail infrastructure**  
TEN-T core network corridors  
Freight corridors  
ERTMS corridors

**Participate in market monitoring  
activities**

**Benchmark the efficiency of IMs  
on the basis of indicators**  
(reliability, capacity, availability,  
punctuality, safety, maintenance,  
financial efficiency...)

# What else do we work on?

**BENEFITS:** providing **legal expertise** on development / implementation of RP and corridor policies

## 1-3 RP

- Monitoring the implementation
- Contributing with proposals that best serve EIM interests
- Focus on charging, funding, multi-annual contracts, capacity allocation rules and performance indicators

## 4 RP

- Pre-legislative and post-legislative analysis
- Monitoring and analysis of policy options
- Dialogue with European institutions in line with EIM interests

## TEN-T

- Pre-legislative and post-legislative analysis
- Scrutiny of the CEF
- Analysis in line with interests and feasibility of EIM Members
- Exploratory talks for potential integration of RFC into CNC

## RFC

- Monitoring the implementation
- Analysis of Freight Corridor requirements (funding, technical criteria, governance bodies, etc.)

# What else do we work on?

**BENEFITS:** sharing **best practices** on technical and interoperability issues

## Interoperability

- TSI & Standardisation
- PRM Practices
- Energy TSI (1520 mm gauge\*)
- Rolling Stock TSI
- Infrastructure TSI
- TSI-conform corridors

\*EIM contributes actively to ERA discussions for maintaining compatibility 1520mm /1420 mm

## Safety

- Sector-wide approach to safety and certification
- Common Safety Methods
- Common Safety Targets
- ERA Security Platform
- Future role of ERA in line with EIM interests

## Telematics

- TSI TAF implementation
- TSI TAP implementation
- Multi-modal journey planner

## Signalling

- ERTMS (baseline 3)
- EC / Sector deployment plan for ERTMS
- GSM-R interferences from public ration networks
- Testing on GSM-interferences at European level

# What else do we work on?

## **BENEFITS:** Advising on the mobilisation of **funding and financing**

### **Funding / Financing**

- Monitoring and analyses of MFF 2014-2020
- Legislative analysis of and lobby for CEF
- Monitoring of Project Bonds Pilot Phase
- Lobby for socio-economic analysis of TEN-T
- Regular consultations with EC and EIB
- Examination of the role of private investors, pension funds, insurance companies

### **Other**

- EIM initiative 'Finding the Funds' brochure
- Defining the parameters for infrastructure in line with TEN-T Guidelines

# What else do we work on?

**BENEFITS:** engaging in work streams based on the **business interests** of EIM Members

## Asset Management

- Share practice and foster training
- Objectives:

### Quantitative:

Benchmarking on Cost and Performance using a segmented network

Determine drivers of Cost and Performance

### Qualitative:

Workshops to exchange best practices on enablers of effective AM

## Resilience

- Crisis management systems
- Comparison of operational IT
- Scrutiny of business continuity systems
- Identification of segmentation principles (regions/weather conditions / scope of problem)
- Publication of 'Best Practice Guide' with recommended contingency actions

## Other

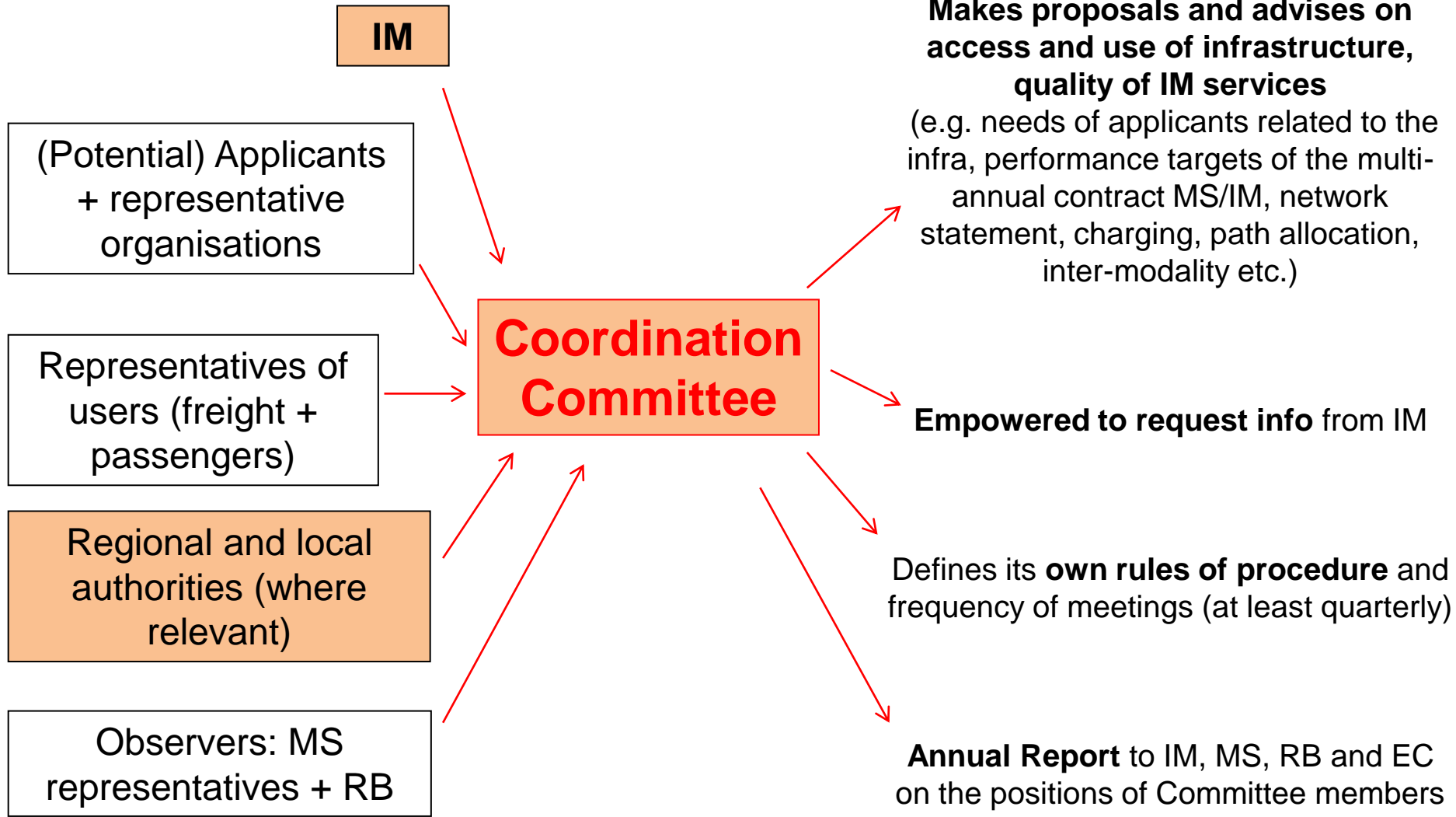
- Security, e.g. metal theft
- EIM participation at EUROPOL conference on metal theft
- Spin-off activities related to existing business activities
- Identification of new initiatives

# What should the regions look at?

---

- ✓ Increased **role** of the regions in 4 RP
- ✓ Enhanced **impact** of 4 RP on the regions
- ✓ Direct **effect** of TEN-T and RFC on the regions
- ✓ Greater **engagement** amongst actors, including regional / local authorities (IMs, RUs, RBs, shippers / forwarders etc)

# 4 Railway Package



**Regulatory Body**  
Compliance of assessments  
Compliance of procedures

# 4 RAILWAY PACKAGE

## COMPETENT AUTHORITY



### Public Transport Plans (PTPs)

### Public Service Contracts (PSCs)

### Public Service Obligations (PSOs)

**Objectives:**

- Structure network/route
- Basic requirements (accessibility, frequency)
- Quality standards
- Principles of tariff policy
- Operational req.

**Mandatory content + general rules:**

- Define PSOs + scope
- Basis for compensation payment
- Nature & extent of exclusive rights
- Costs
- Duration
- Quality standards

**Provision of info**  
(operational, financial, technical):

- Passenger demand
- Fares, costs, revenues
- **Infrastructure specifications**

**Awards:**

**Competitive tendering:**  
Open, fair, transparent, non-discriminatory

**Direct:**  
Either average annual value less than 5M€ or annual provision of less than 150.000 km

- Limit No to same RUs
- Access to rolling stock

Specifications + scope:

On objectives of PTPs:

- Appropriate
- Necessary
- Proportionate

Cost-effective  
Financially sustainable

### Following consultation:

if appropriate

IM

Passenger / Employee Org

RUs



‘Having regard to the opinion of the Committee of the Regions’  
Opinion of the EP Regional Development Committee

TEN-T  
Guidelines  
1996

TEN-T  
Amending  
Decisions  
2001 + 2004

TEN-T  
Recast  
2010

**RFC 2010**  
Implementation  
plan

**TEN-T Rev (2011)**

Core and  
comprehensive  
networks

**CEF 2011**

(+ Cohesion Fund)

## ***EC Proposal - Explanatory Memorandum - Legal elements of the Proposal***

(3.5) While the Member States have traditionally been the main actors involved in transport infrastructure development and management, developments suggest that this situation has been progressively changing. **Regional and local authorities, infrastructure managers**, transport operators and other public and private entities have also become key actors in the development of infrastructure.

## ***EC Proposal - Art 51 - Coordination of core network corridors***

(5) (d) The European Coordinator shall **consult**, in cooperation with MS concerned, **in particular regional and local authorities, infrastructure managers**, transport operators, transport users and [...] with a view to gaining a fuller knowledge of the demand for transport services, [...].

## ***EC Proposal - Recital (11)***

TEN-T for 2014-2020 needs 500 B€ of which 250 B€ for the core network.

## ***EC Proposal - Recital (13)***

In order to improve the delivery of transport projects, in particular cross-border ones, with a high Union added value, part of the **Cohesion Fund allocation (10 B€)** should be transferred to the Cohesion Fund [...].

## ***EC Proposal - Art 3 - General Objectives***

(a) Contribute to smart, sustainable and inclusive growth by developing modern and high performing trans-European networks, thus bringing forward benefits for the entire European Union in terms of competitiveness, **economic, social and territorial cohesion** within the Single Market [...].

## ***Art 9 - Measures for implementing the freight corridor plan***

(1) The management board [composed of representatives of IMs] shall draw up an implementation plan [...].

[...]

(5) The management board [composed of representatives IMs] shall, **as appropriate**, take measures to cooperate **with regional and/or local administrations** in respect of the implementation plan.

1. Who EIM are, how we operate and how our Members benefit from cooperation through EIM
2. Goals of EIM and what EU legislation EIM covers
3. Role of IMs and regions in EU legislation, 4 RP and Corridors
4. Increasing role of the regions

How do you influence legislation?

How do you lobby for your interests?

Can we help?



**Thank you for your attention!**

**[www.eimrail.org](http://www.eimrail.org)**

**EIM – Square de Meeus 1 – 1000 Brussels – Tel. 0032 2 2343770**